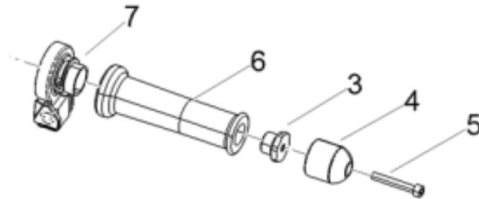


Aprilia Bar Extenders

Installation instructions

These bar ends thread into the bars of the RSV4 directly. They will also thread into the bars of other Aprilia models after removing the OEM weights that are under the bar ends (see item 3 in the diagram below). Remove the stock bar ends if installed. Remove the bar end weight if currently installed. There is an 8mm hex recess around the internal threads at the end of the extender. That recess can be used with an 8mm hex key or hex bit socket to tighten the extender. If the hex bit socket is used with a torque wrench the bar end can be tightened to factory specifications.



At this point accessories made to install on to 7/8" bars can be bolted to the extenders. There is also an M6 threaded hole that can be used to bolt items like hand guards to the end of the extender as well.

Important – RhinoMoto sliders are designed as an aid to help **reduce the chance** of damage to your motorcycle in the event of a fall. There is no way to reliably predict what a motorcycle will do when it tips over, so it is impossible to design a product that will guarantee that it will prevent damage in all cases. RhinoMoto sliders are not designed to offer any protection to the rider in any circumstances and as such should not be considered safety devices. RhinoMoto assumes that a qualified mechanic will install these products. If you are unsure about your ability to correctly install these sliders, return them uninstalled to the place of purchase for a refund.